



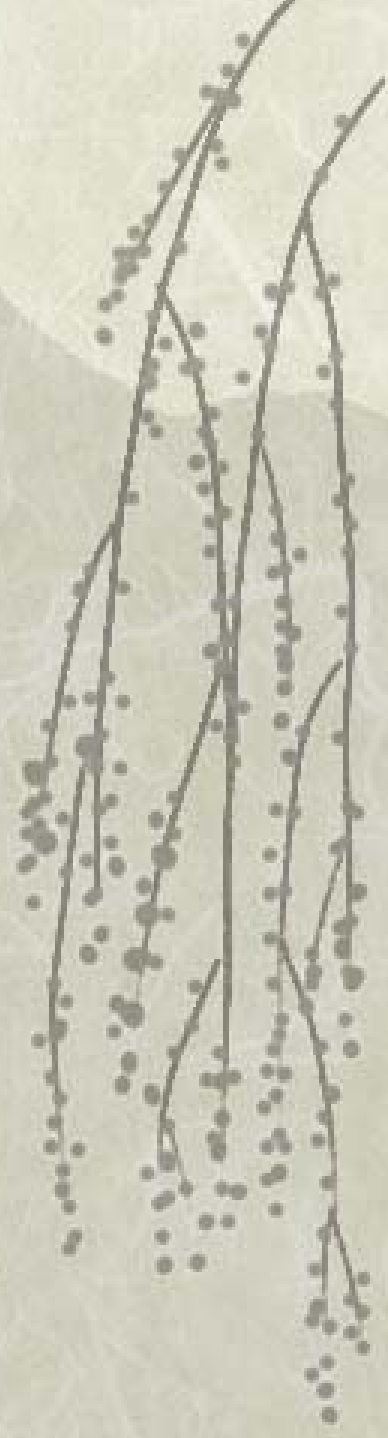
*Regionalization: The Lived
Experience*

Helga Bryant
Lori Embleton

Historical Context

1997/1998

- ❖ Political Environment
- ❖ Healthcare Environment
 - Urban
 - Rural
 - Acute Care
 - Long Term Care
 - Community
 - Program Structure



Phased Approach

- ❖ Rural (1997)
 - 10 Regions
- ❖ Urban (1998)
 - 3 Regions
 - Brandon
 - Winnipeg Community
 - Winnipeg Hospital

Lived Experience....Then

- ❖ Skepticism and concern
- ❖ Political interference
- ❖ “Turf”
- ❖ Public Response
- ❖ Health Care Staff Response
- ❖ Role of Nurse Leaders



Lived Experience....Now

- ❖ Coordination
- ❖ Collaboration
- ❖ Planning
 - Site.....Program
- ❖ Opportunity
- ❖ Diversity
- ❖ Role of Nurse Leaders



Lived Experience....But

- ❖ Sites versus Programs
- ❖ Public Expectations
- ❖ Competing Needs/Wants
- ❖ Political/Media/Health Care Interface
- ❖ Labour Issues
 - Contractual
 - Human Resources
- ❖ Role of Nurse Leaders



Repeat Performance....Yes

- ❖ Coordination
- ❖ Access
- ❖ Service Delivery
- ❖ Care Trajectory
- ❖ Public Expectations
- ❖ **NURSING ROLE**
 - Passion
 - Holism
 - Trust and Respect

